

# GY2 GATEWAY

## PROGRAMMING SHEET



### SOFTWARE INSTALLATION

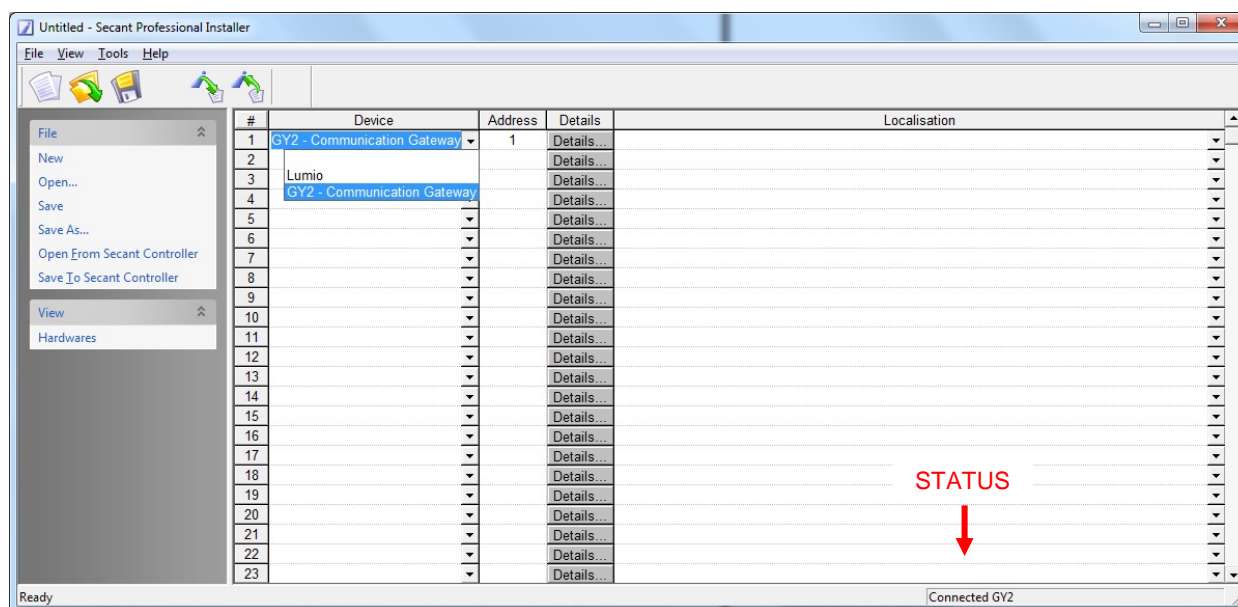
The « SECANT professional installer software » is compatible with all Microsoft Windows® versions. Install the software by following the procedure. Once done, you will be able to start the software from the “SECANT” file in the “All software’s” of Windows®.

### GY2 PROGRAMMING

Start the « SECANT professional installer » and use a USB cable to connect the GY2 to the computer. Once connected, you can check the device status in the lower right end corner of the main window.

#### GY2 CONFIGURTION

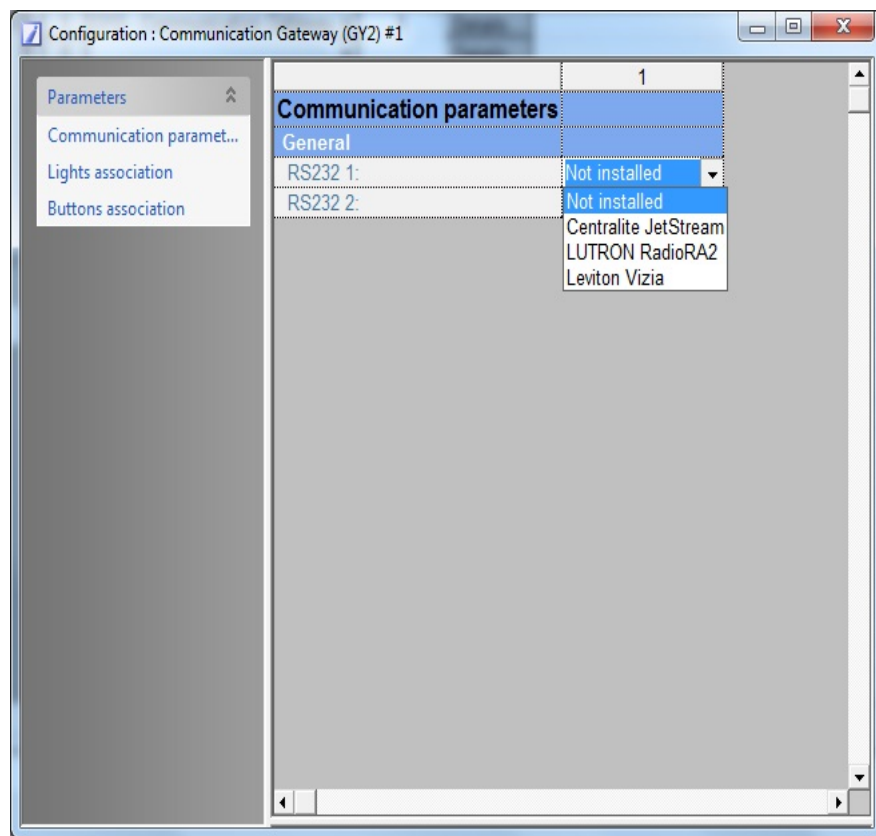
Main window of the software:



1. In the « Device » column pick GY2 – Gateway to associate the GY2 module.
2. To configure the GY2, click on « Details », (see following window)

## COMMUNICATION SETTINGS

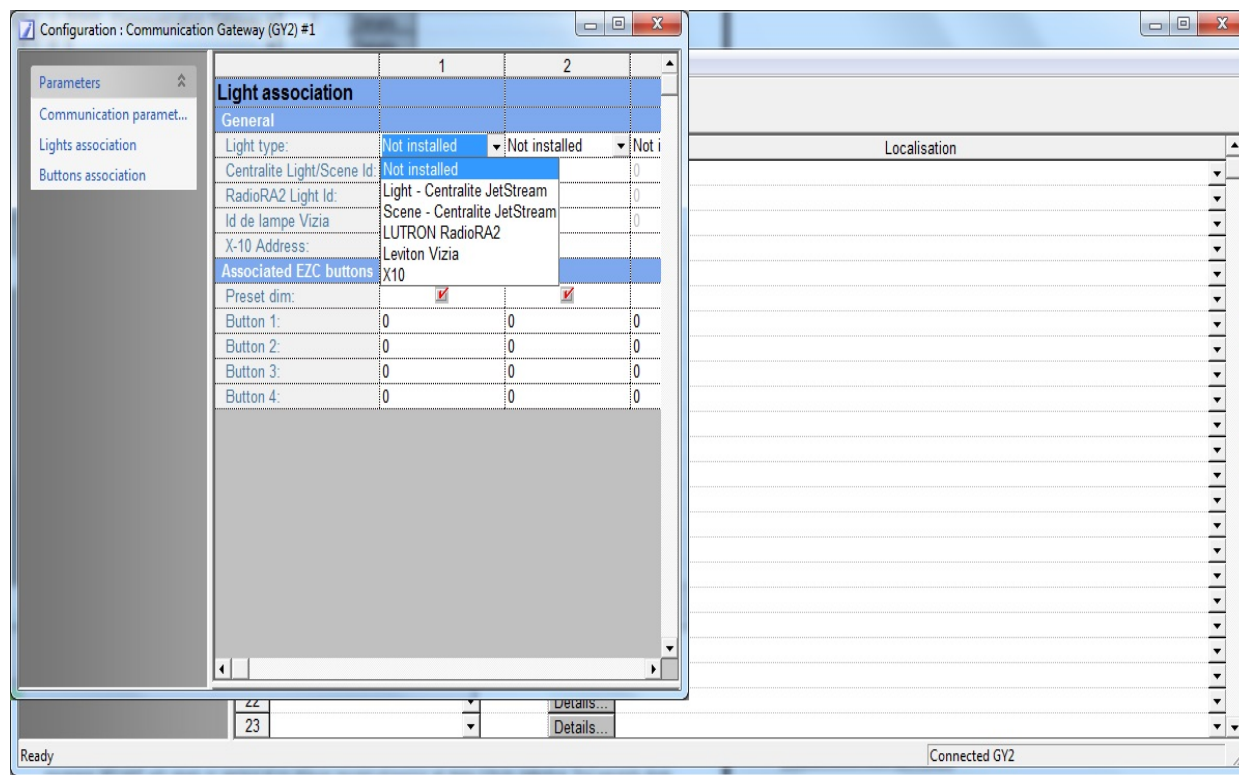
Click on « Details » then the following window appears:



1. Pick the communication type for the RS-232 #1 et #2 ports of the GY2 module according to the type of controller connected to each of the communication ports. You can choose from :
  - Centralite Jetstream™
  - Lutron RadioRa®
  - Leviton Vizia
2. Once the communication protocol picked, you have to associate the lights in order to continue the configuration of the GY2 module. Click on « Light association » (see following window) :


## ASSOCIATING LIGHTS

After having clicked on « Light association» the following window appears:



1. For each light to be associated to the GY2, it is important to specify the type. You can pick between:
  - Centralite JetStream
  - Lutron RadioRA2
  - Leviton Vizia
  - X10 is not supported
2. For each light specified at the step before, it is important to specify the light address (id).  
**NOTE:** refer to each light module technical sheet in order to have a successful addressing.
3. In addition it is possible to specify up to 4 addresses of switches (keypads) connected to a SECANT EZC module. If you do not know the switch numbering use the setting #2 of the EZC (refer to the EZC technical sheet) in order to find the number of a switch connected to the GY2.
4. When done, close the configuration to get back to the main window.

## TO END THE PROGRAMMING

1. After the light configuration is complete you have to send the configuration to the GY2 module.
2. To do that, use the option « Save to Secant controller» in the file menu or click on the following  The programming will then be sent to the GY2.


**WARNING: at the end of this process the software will give you instructions to disconnect and then connect again the GY2 USB cable.**

## HOW TO SAVE THE CONFIGURATION

1. From the main window of the software use the option « Save as ». Then the software will create a file (.SecantHardware) it will ask you to name.
2. Then select the file of your computer in which you want the configuration to be saved and click “save”

**NOTE: we strongly recommend to always save the configuration of the GY2 module in order to be able to retrieve it so that it can be used later.**

## TO IMPORT AN ALREADY EXISTING GY2 CONFIGURATION

1. Start the «SECANT installer software»
2. Connect the GY2 to your computer and wait until the status of the device shows « connected »
3. Then use the option « File – Open from Secant controller » or click on 
4. The GY2 configuration will then be imported into the software and could be modified if necessary

## CONFIGURING THE NETWORK - Centralite

This section describes how to interface the Centralite Jetstream™ wireless lighting system to the SECANT controller using the GY2 Gateway. The GY2 allows a two way communication between the SECANT controller and Centralite Jetstream™.

Required documentation:

- Jetstream™ RS-232 Bridge User's Guide ([www.centralite.com](http://www.centralite.com));
- Jetstream™ Installation and Programming Manual ([www.centralite.com](http://www.centralite.com));

Required equipment :

- SECANT Cardio controller;
- SECANT GY2 Gateway;
- Centralite Jetstream™ RS-232 Bridge;
- Centralite Jetstream™ USB Bridge;
- Centralite Jetstream™ software
- RS-232 DB9 cable male to DB9 female.

To manage the Centralite Jetstream™ lighting system from a SECANT controller it is necessary to go through a few configuration and installation steps:

### **FIRST: INSTALLING THE EQUIPMENT**

1. Install the Centralite Jetstream™ software in your computer
2. Connect the « Jetstream™ USB Bridge » interface to the USB port of your computer
3. Connect the power supply of the « Jetstream™ RS-232 Bridge ».
4. Install and connect all the « Centralite Jetstream™ » devices

### **CONFIGURING THE CENTRALITE JETSTREAM™ NETWORK**

The first step is to install the Centralite Jetstream™ network using the instructions procedures in « Jetstream™ Installation and Programming Manual ». List all the Centralite devices which will be part of the future network.

Use the instructions in « Jetstream™ RS-232 Bridge User's Guide » to connect the « Jetstream™ RS-232 Bridge » interface to the network.

## NOTE THE ADDRESSES OF THE CENTRALITE DEVICES

To control Centralite devices with Secant controllers, you have to configure the GY2 module so that it can match the Secant controller light structure with that of the Centralite network.

- With the « Centralite Jetstream™ » software, note all the light addresses that make your Jetstream™ Centralite network. The address of each device is given by the « Device Id » field.

## ACTIVATE THE TRANSMISSION OF THE LIGHT STATUS

When a light on the Jetstream™ network changes its status, it sends its new status to the « Jetstream™ RS-232 Bridge » interface. In order for this interface to send this new status to the GY2, it is important to select this option for each light.

- For each light to be managed make sure that the « Send T-Party » option is selected.

The screenshot shows the JetStream software interface. The title bar reads "JetStream - Software Version 1.2.1.0 - Connected to USB001 v01.05.00 on COM6". The interface is divided into several sections:

- Left Panel:** A tree view under "JetStream(5)" showing "Device 4", "Device 5", "Device 6", "Device 10", and "RS232 Bridge". A red arrow points to "Device 4".
- Top Panel:** Configuration fields for "Device 4":
  - Device ID: 4
  - Mac Address: C1CB2500006F0D00
  - Zigbee Address: 0x527B
  - Device Name: Device 4
  - Device Type: Three Button Dimmer
- Control Panel:** A grid of settings:
  - Dimmer (set to 5)
  - Soft On (set to 2)
  - Soft Off (set to 2)
  - Use Min Level
  - Keypad
  - Blink
  - Send T-Party (highlighted with a red arrow)
  - Button Capture
  - Firmware: 1.10
  - Signal: -62dB
  - Level: 0%
  - Get Signal Strength button
  - Preset Level: 100% (shown on a yellow background)
  - On, Off, Refresh buttons
- Bottom Panel:** "Advanced Button Settings" section:
  - Buttons: Three button icons
  - Button Settings: Load selected, Scene unselected; Input set to "Device 4 - 4"
  - Timeout (S): 0
  - Minimum Level: 0%

A green status bar at the bottom reads "Connected to USB001 v01.05.00 on COM6".

## CHANGE OF COMMUNICATION SPEED

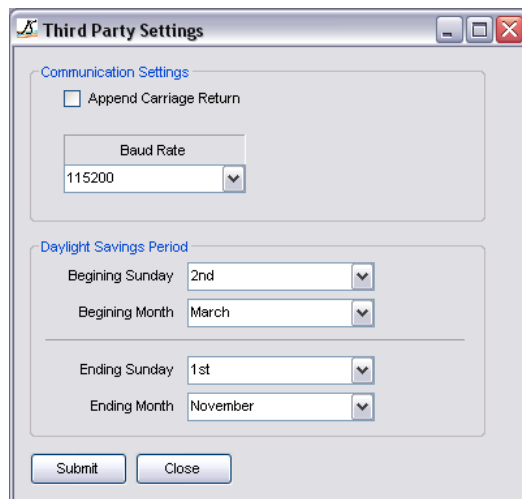
Before establishing the communication between the GY2 and the « Jetstream™ RS-232 Bridge », it is important to set the communication speed at 115,200 bauds.

- Start the « Centralite Jetstream™ » software, click on « RS 232 Bridge » and then on « Settings » in the centre of the screen :

The screenshot displays the JetStream software interface, titled "JetStream - Software Version 1.2.1.0 - Connected to USB001 v01.05.00 on COM6". The interface is divided into several sections:

- Menu Bar:** File, Network Configuration, Tools, Bridge, View, Help.
- Toolbar:** Open, Save, Discovery, All On, All Off.
- Left Panel:** Contains a "Devices" section with a "Refresh" button and a tree view showing "JetStream(1)" and "RS232 Bridge". Below this are "Devices" and "Scenes" sections.
- Main Content Area:** Titled "JetStream", it contains configuration fields for:
  - Device ID: 11
  - Mac Address: 1D5C380006F0D00
  - Zigbee Address: 0x36EC
  - Device Name: RS232 Bridge
  - Device Type: RS232 Bridge
  - Firmware: 1.7
  - Signal: -70dB
  - Buttons: "Get Signal Strength", "Update Third Party" (checked), "Refresh", "Set", "Get Time", "Clock-PC Sync".
  - Date - Time: 12:37:54, 2010-03-11
- Bottom Section:** A navigation bar with "Send All", "Send Device", "Location", and "Settings" (highlighted with a red arrow). Below this is a "Calendar" widget showing "mars 2010" and "avril 2010". To the right of the calendar is a "Day" view showing a timeline for "11 mars" with time slots from 08:00 to 09:00.
- Status Bar:** A green bar at the bottom left indicates "Connected to USB001 v01.05.00 on COM6".

The following window appears:



Through the « Third Party Settings » dialogue box set the communication speed at 115,200 and click on « Submit » to confirm.

## INFORMATION

### To order

Din GY2 module ⇔ GY2  
Secant software ⇔ SECANT PROFESSIONAL INSTALLER

## WARRANTY

SECANT Home Automation inc. warrants goods of its manufacture as being free of defective materials and faulty workmanship for a period of three (3) years. If goods under warranty are returned to SECANT during the period of coverage SECANT will repair or replace at no charge (except shipping) all items it finds defective. The warranty does not apply to defective products due to incorrect or abusive use.

**SECANT** Domotique  
Home Automation  
[www.secant.ca](http://www.secant.ca)

Secant Home automation inc. reserves the right to make any changes in this information sheet at any time without notice.  
Domotique Secant inc. se réserve le droit de modifier toute information contenue dans cette fiche à n'importe quel moment et sans préavis.  
Secant Home Automation inc. se reserva el derecho de hacer cualquier cambio en esta ficha de información en cualquier momento y sin previo aviso.

Copyright © Domotique Secant inc. 2013-10-21

GY2\_PN\_Rev02eN